

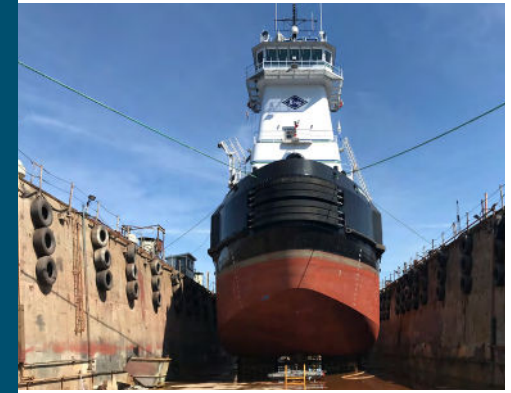
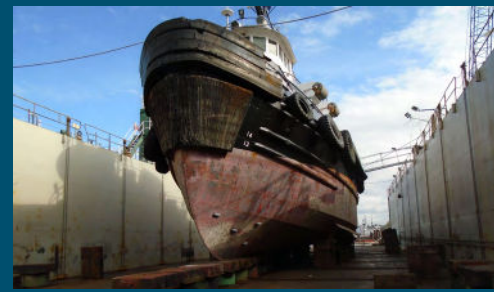
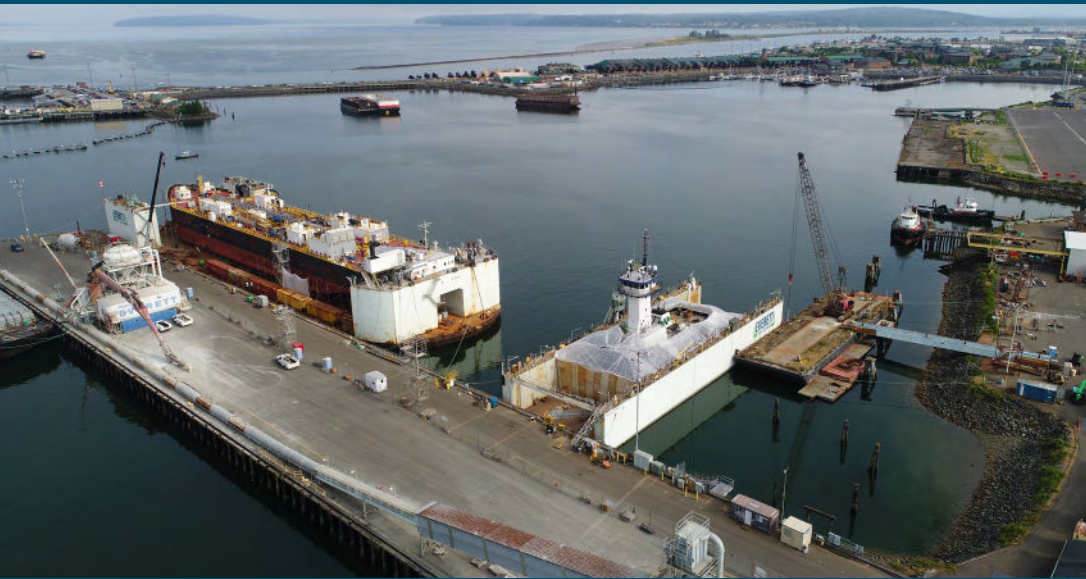
# EVERETT

## SHIP REPAIR



*Pacific Northwest's Premier  
Ship Repair Facility*

# VAST SHIP REPAIR CAPABILITIES



## TWO DRYDOCKS TO GET ANY JOB DONE

- **Faithful Servant** has working deck size of 436' x 110' with a lifting capacity of 8,000+ ST.
- **Emerald Lifter** has working deck size of 220' x 62' with a lifting capacity of 2,000+ ST.

## REPAIR MAINTENANCE

ESR Offers In-Water Service with **1000'** of Moorage Space

## MAJOR CONVERSION MODERNIZATION

- Floating Crane Support
- Blasting - Grit and UHP
- Shop Support



# **EVERETT**

## **SHIP REPAIR**

### **SALES**

**LANE RICHARDS**

360.929.5221

[LANE@EVERETTSHIPREPAIR.COM](mailto:LANE@EVERETTSHIPREPAIR.COM)

### **GENERAL INQUIRIES**

[info@everettshiprepair.com](mailto:info@everettshiprepair.com)

[WWW.EVERETTSHIPREPAIR.COM](http://WWW.EVERETTSHIPREPAIR.COM)

**QUALITY REPAIR SERVICES**